

**BALDOR® • RELIANCE** 

**Product Information Packet**

**SUM21004-4**

**10HP,1800RPM,3PH,60HZ,210TY,TENV,FOOTLE**

Part Detail							
Revision:	A	Status:	PRD/A	Change #:		Proprietary:	No
Type:	AC	Elec. Spec:	E02263L AW017	CD Diagram:	416820-001	Mfg Plant:	
Mech. Spec:		Layout:	066930-502	Poles:	04	Created Date:	04-09-2015
Base:		Eff. Date:	11-07-2018	Leads:			

Specs			
Catalog Number:	SUM21004-4		
Enclosure:	TENV		
Frame:	210TY		
Frame Material:	Iron		
Output @ Frequency:	10.000 @ 60 HZ		
Voltage @ Frequency:	230 V @ 60 HZ		
	460 V @ 60 HZ		
XP Class and Group:	None		
XP Division:	Not Applicable		
Agency Approvals:	CCSA US		
	CE		
	WEEE		
Base Indicator:	Rigid		
Bearing Grease Type:	Polyrex EM (-20F +300F)		
Current @ Voltage:	13.0 A @ 460 V		
	26.0 A @ 230 V		
Design Code:	B		
Drip Cover:	No Drip Cover		

<b>Duty Rating:</b>	15 MIN		
<b>Heater Indicator:</b>	No Heater		
<b>Insulation Class:</b>	F		
<b>Inverter Code:</b>	Not Inverter		
<b>KVA Code:</b>	G		
<b>Lifting Lugs:</b>	Standard Lifting Lugs		
<b>Motor Type:</b>	M		
<b>Mounting Arrangement:</b>	V1		
<b>Product Family:</b>	Other		
<b>Pulley End Bearing Type:</b>	Ball		
<b>Pulley Face Code:</b>	Standard		
<b>Shaft Rotation:</b>	Reversible		
<b>Shaft Slinger Indicator:</b>	No Slinger		
<b>Speed Code:</b>	Single Speed		
<b>Motor Standards:</b>	NEMA		
<b>Starting Method:</b>	Direct on line		
<b>Thermal Device - Winding:</b>	Normally Closed Thermostat		

Nameplate 000613006SC

KG

<b>Nameplate 000613007MN</b>										
<b>CAT NO</b>	SUM21004-4		<b>SPEC NO.</b>	P21G2756						
<b>HP</b>	10	<b>AMPS</b>	26.0/13.0		<b>VOLTS</b>	230/460		<b>DESIGN</b>	B	
<b>FRAME SIZE</b>	00210TY	<b>RPM</b>	1755		<b>HZ</b>	60	<b>AMB</b>	40	<b>SF</b>	1.15
<b>D.E. BRG.</b>	60BC02JPP30A		<b>PH</b>	3	<b>DUTY</b>	15MIN		<b>INSUL</b>	F	
<b>O.D.E. BRG.</b>	30BC02JPG30A		<b>TYPE</b>	P	<b>ENCL</b>	TENV		<b>CODE</b>	G	
			<b>POWER FACTOR</b>		<b>NEMA-NOM-EFF</b>					
			<b>MAX CORR KVAR</b>		<b>GUARANTEED EFFICIENCY</b>					
					<b>NEMA NOM/CSA QUOTED EFF @</b>					
<b>SER.NO.</b>					<b>MOTOR WEIGHT</b>			<b>LBS.</b>		
	SUB. IN WATER ONLY; MAX									
	DEPTH- REFER TO INSTR MANUAL									
	*15 MIN IN AIR FINAL CONN AT 460V									

<b>Nameplate 000613007MR</b>										
<b>CAT NO</b>	SUM21004-4		<b>SPEC NO.</b>	P21G2756						
<b>HP</b>	10	<b>AMPS</b>	26.0/13.0		<b>VOLTS</b>	230/460		<b>DESIGN</b>	B	
<b>FRAME SIZE</b>	00210TY	<b>RPM</b>	1755		<b>HZ</b>	60	<b>AMB</b>	40	<b>SF</b>	1.15
<b>D.E. BRG.</b>	60BC02JPP30A		<b>PH</b>	3	<b>DUTY</b>	15MIN		<b>INSUL</b>	F	
<b>O.D.E. BRG.</b>	30BC02JPG30A		<b>TYPE</b>	P	<b>ENCL</b>	TENV		<b>CODE</b>	G	
			<b>POWER FACTOR</b>			<b>NEMA-NOM-EFF</b>				
			<b>MAX CORR KVAR</b>			<b>GUARANTEED EFFICIENCY</b>				
					<b>NEMA NOM/CSA QUOTED EFF @</b>			<b>100% LOAD</b>		
<b>SER.NO.</b>			<b>MOTOR WEIGHT</b>			<b>LBS.</b>				
	SUB. IN WATER ONLY; MAX									
	DEPTH- REFER TO INSTR MANUAL									
	*15 MIN IN AIR FINAL CONN AT 460V									

Parts List		
Part Number	Description	Quantity
SA297394	SA P21G2756	1.000 EA
RA284359	RA P21G2756	1.000 EA
424476003WB	WIRING DIAGRAM MEDIUMA	1.000 EA
424476003WB	WIRING DIAGRAM MEDIUMA	1.000 EA
000613006SC	N/P CERTIFICATION	1.000 EA
000613007MN	NP,MEDIUM AC,NO CERT,STD INDUSTRIAL	1.000 EA
000613007MR	NP, MEDIUM AC, CSA, STD INDUSTRIAL	1.000 EA
000692000EJ	NAME PLATE	1.000 EA
000692000RY	NAME PLATE	1.000 EA
000901001AA	LABEL WARNING	1.000 EA
001575000A	WIRING DIAGRAM	1.000 EA
034692002AE	HCSPP 1/4" 304 S.S.	1.000 EA
004824015A	GREASE POLYREX EM	0.100 LB
032018012DG	HHCS 1/2-13X1-1/2 316S.S	4.000 EA
032130010DC	HSHCS 1/2-13X1-1/4 304SS	4.000 EA
034692003AE	PPLG 3/8" 304 S.S.	2.000 EA
047174005C	SNAP RING	1.000 EA
047174005D	SNAP RING	1.000 EA
064262012C	SEAL	1.000 EA
064262012D	SEAL	1.000 EA
032080003JB	HWHMS 10-24X3/8L PLTED	4.000 EA
088207001AA	BRKT,DE,210SUB 88207-1WA	1.000 EA
088208001AA	MTG PLATE EX210Y SUBMERSIBLE 088208001WB	1.000 EA
413412004A	SUBM MOISTURE PROBE	2.000 EA

Parts List (continued)		
Part Number	Description	Quantity
413412005S	LEAD WIRE ASSY(BLANKET	1.000 EA
413480001R	RESISTOR ASSEMBLY-BLANKET	1.000 EA
421900144FU	ORING	1.000 EA
421900144FU	ORING	1.000 EA
004824018AF	SHELL ROTELLA OIL 10W	4.569 LB
032018006BM	HHCS 5/16-18X3/4 PLTGRN.	1.000 EA
032018006BM	HHCS 5/16-18X3/4 PLTGRN.	1.000 EA
034036013AB	LCKW 5/16 EXT.TOOTH LCKW	1.000 EA
047024003AH	T/LUG AMP 34112	4.000 EA
034036013AB	LCKW 5/16 EXT.TOOTH LCKW	1.000 EA
032018006BM	HHCS 5/16-18X3/4 PLTGRN.	1.000 EA
032018010CG	HHCS 3/8-16X1-1/4L 316SS V2T23	4.000 EA
032080003LB	HWHMS 1/4-20X3/8L PLTED	6.000 EA
415031017A	NUT W/WASHER 10-24 C.PLT	4.000 EA
047024003B	T/LUG AMP 33218	9.000 EA
415031017B	NUT W/WASHER1/4-20 C.P	6.000 EA
421900092FU	ORING	1.000 EA
609181014D	HEAT SHRINK TUBING 3/4	10.000 EA
700385014M	CCA #8 25' 210/250	1.000 EA
004824007K	SPECIAL PAINT	0.100 EA
033775004EA	DRSCR #6-1/4 304 S.S.	4.000 EA
034180009FD	KEY 3/8X3/8X1-1/8 303 SS	1.000 EA
B3630-9	SUBM THERMOSTAT TAG	1.000 EA
B-3664002	TAG, (NON REGREASABLE)	1.000 EA

Product Information Packet: SUM21004-4 - 10HP,1800RPM,3PH,60HZ,210TY,TENV,FOOTLE

088206001AB	BRKT,ODE,210SUB 88206-1WB	1.000 EA
421900144FU	ORING	1.000 EA
032018008BG	HHCS 5/16-18X1 BRASS-447	3.000 EA
032018012DG	HHCS 1/2-13X1-1/2 316S.S	4.000 EA
000901001AA	LABEL WARNING	1.000 EA

REL. S.O.	FRAME	HP	TYPE	PHASE/HERTZ	RPM	VOLTS
	210TY	10	P	3/60	1755	230/460
AMPS	DUTY	AMB °C/ INSUL.	S.F.	NEMA DESIGN	CODE LETTER	ENCL.
26/13	*	40/F	1.15	B	G	SUB
E/S	ROTOR	TEST S.O.	TEST DATE	STATOR RES (25 °C OHMS (BETWEEN LINES))		
534499	418425-43FE	---	---	.339/1.35		

**PERFORMANCE**


LOAD	HP	AMPERES	RPM	INPUT KW	POWER FACTOR	% EFFICIENCY
NO LOAD	0	4.8	1800	.609	15.9	0
1/4	2.51	5.8	1789	2.52	54.2	74.2
2/4	5.00	7.8	1779	4.50	72.8	83.0
3/4	7.50	10.2	1768	6.56	80.6	85.3
4/4	10.0	13.0	1756	8.71	84.1	85.6
5/4	12.5	16.1	1742	11.0	85.4	84.8

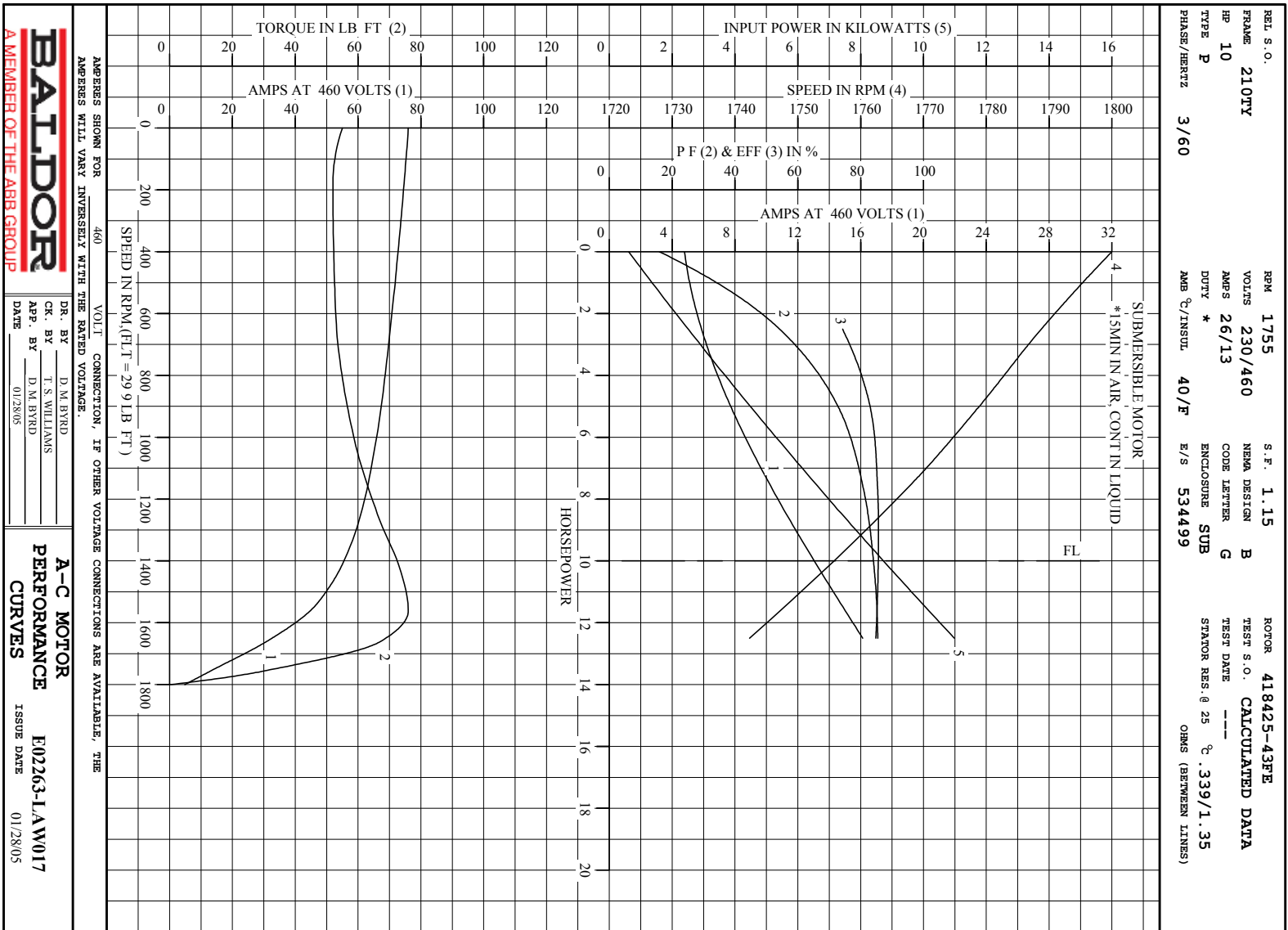
**SPEED TORQUE**

	RPM	TORQUE % FULL LOAD	TORQUE LB.-FT.	AMPERES
LOCKED ROTOR	0	184	55.0	76.0
PULL UP	180	174	52.0	74.7
BREAKDOWN	1561	254	76.0	44.8
FULL LOAD	1756	100	29.9	13.0

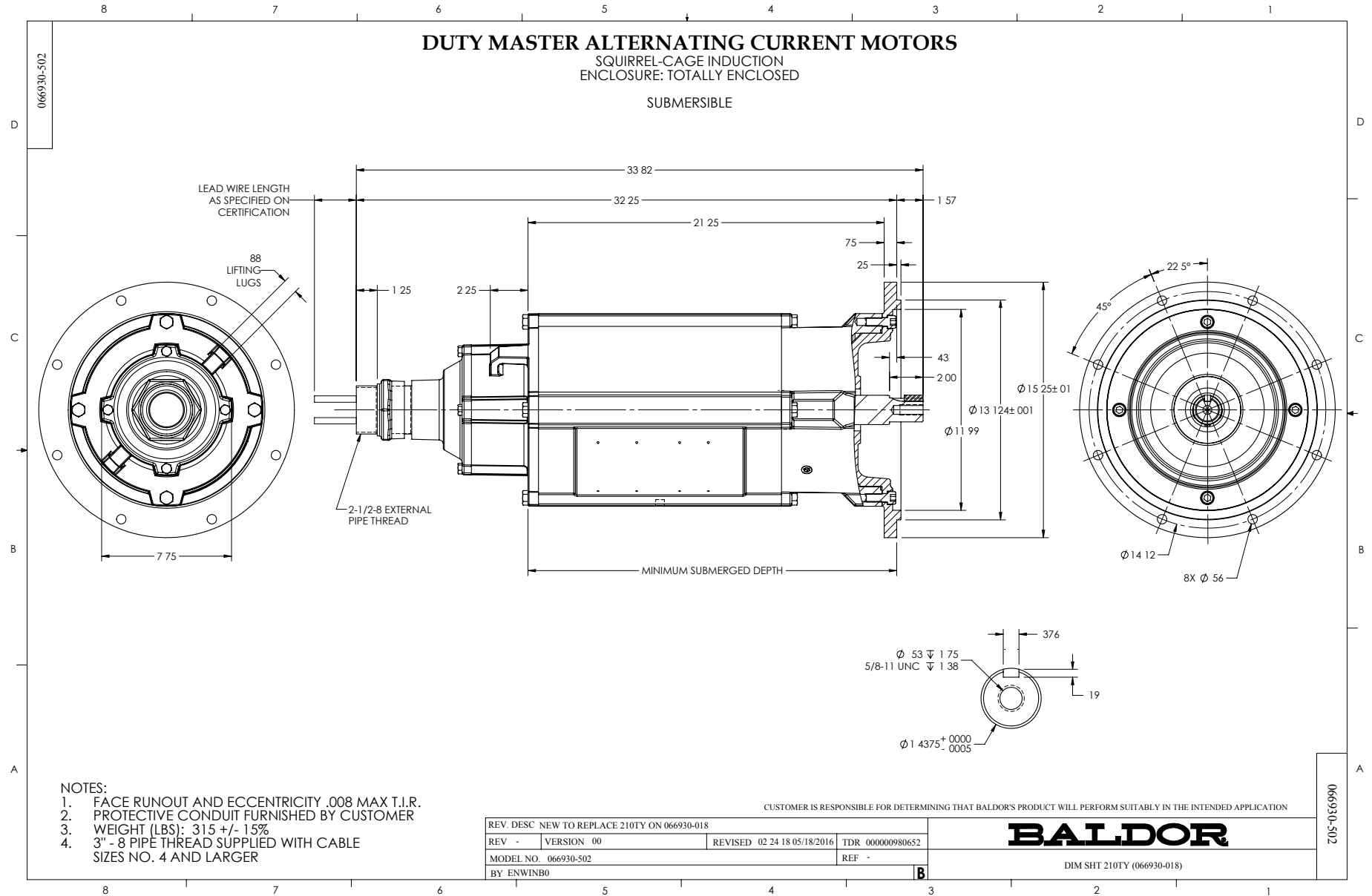
AMPERES SHOWN FOR 460. VOLT CONNECTION. IF OTHER VOLTAGE CONNECTIONS ARE AVAILABLE, THE AMPERES WILL VARY INVERSELY WITH THE RATED VOLTAGE

REMARKS : CALCULATED DATA  
SUBMERSIBLE MOTOR  
\*15MIN IN AIR, CONT IN LIQUID

 A MEMBER OF THE ABB GROUP	DR. BY	D. M. BYRD	<b>A-C MOTOR</b> <b>PERFORMANCE DATA</b> <b>E02263-LAW017</b> ISSUE DATE 01/28/05
	CR. BY	T. S. WILLIAMS	
	APP. BY	D. M. BYRD	
	DATE	01/28/05	

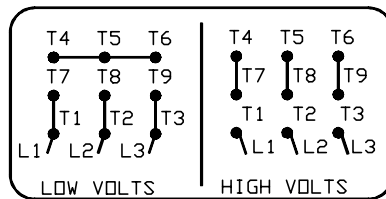
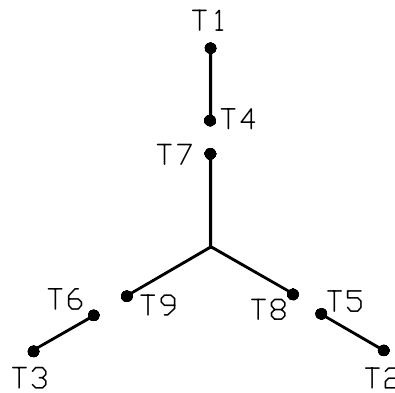


Printed on 4/2/15 9:36 @ r99



416820-001

A-C MOTOR  
 CONNECTION DIAGRAM  
 STANDARD 9 LEAD Y CONNECTED



< N. P. 1575-A >

416820-001

REV. DESC: FONT CHANGE FOR PDF SEARCHABLE		
REV. LTR: A	VERSION: 01	TDR: 000001009382
FILE: \MGA\00000\659	REVISED: 10: 33: 07 12/21/2016	BY: MGHMTT
MTL: -	Ⓢ □	

**BALDOR**

CONN DIAG - STANDARD 9 LEAD, Y CONNECTED

SH 1 of 1

Marketing maintained PDF of MN414:

<http://www.baldor.com/support/Literature/Load.ashx/MN414?ManNumber=MN414>

